

# OSCI | OPEN STATE CASSETTE INSERT

---

## Technical Data Sheet

Version: 1.16 - September 2023



Acoustic, fire and thermal insulation specialists

## Application

**Siderise Open State Cassette Inserts (OSCI)** are designed for use in Cassette Panel Cladding Systems.

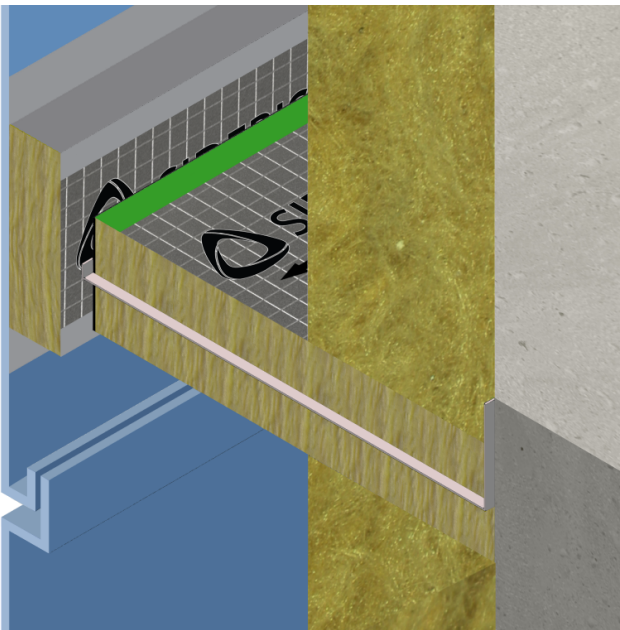
**OSCI** can be used both horizontally and vertically as part of a cladding system. They are applied directly to the internal surface of the cassette panel to simplify the detailing and installation of adjacent cavity barriers and/or to ensure that the ventilation air gap is dimensioned within permissible limits.

**OSCI** are positioned parallel and aligned centrally to Siderise 'RH' or 'RV' Cavity Barriers, taking into account the specification of the cladding system assembly. Typically, this requires consideration of the specification and configuration of the cladding panels, the positioning of the support rails or similar steelwork, and/or hook-on or bracket arrangements for panel support.

## Product Description

**Siderise OSCI** products are manufactured from high density non-combustible stonewool (Class A1) with a foil-facing on two sides. One side has an additional high-performance modified acrylic pressure-sensitive adhesive with strippable film.

**OSCI** are available in a range of sizes and are selected according to the type and size of the corresponding Siderise Cavity Barrier specification on a project basis. Please refer to Table 1.



## Fire Performance

Siderise OSCI have demonstrated fire performance via a variety of cassette panel cladding system tests to BS 8414 and NFPA 285. For information regarding performance and assembly details in system tests please see our website.

Standard available Siderise OSCI as per Table 2 are classified 'A2-s1, d0' to EN 13501-1 for Reaction to Fire.

Please Note:

It is the responsibility of the system designer, supplier and/or contractor to ensure that the final system and all associated components meet all functional and regulatory requirements. This includes the suitability and inclusion of OSCI.

Please contact Technical Services for further advice - [technical.services@siderise.com](mailto:technical.services@siderise.com)

## Thermal Performance

Thermal Conductivity is 0.043 W/m.K.

## Technical Specification

Siderise OSCI products are manufactured from high-density non-combustible stonewool (Class A1) with a foil facing on two sides. One side has an additional high-performance modified acrylic pressure-sensitive adhesive with a strippable film.

Once in position, Siderise Aluminium Jointing Tape (RFT120/45) must be applied to cover the stonewool faces and overlap onto the rear of the cladding panel and OSCI foil facing. Please see installation instructions for further details.

Whilst OSCI's have been successfully tested as components within full-scale system fire tests without mechanical fixing (i.e. via adhesive fixing only), it is assistive where possible to place the OSCI within cassette panel returns.

Please note: We can confirm that we can support the use of the OSCI without mechanical fixings when bonded to an aluminium substrate in line with our installation instructions. However, we note that it is the preference of some authorities, such as NHBC, to use additional mechanical retention, which we have no objection to in principle. Examples of how mechanical retention might be added are included in the OSCI Installation Instructions. Where NHBC have an involvement in the project, we suggest engaging with them to agree any such provision. Similar engagement should be made with any other Supervisory Authorities to verify whether they have any such requirements.

### Additional Installation Instructions

Application can be either in factory conditions prior to delivery, or on-site. In both instances, the product must be kept dry and installed in dry conditions. The surface of the panel should be clean and free from contamination. It should be degreased where necessary and fully dry.

### Positioning

- Careful measurement and marking of the appropriate position of the OSCI onto the panel is essential.
- Once the adhesive backing is removed and the OSCI is fixed it will be very difficult to remove without damaging the OSCI and requiring replacement.
- The OSCI should be positioned parallel and central to the corresponding Siderise 'RH' or 'RV' Cavity Barrier.

- Having placed the OSCI onto the back of the panel, it should be offered up to ensure correct alignment with the Siderise 'RH' or 'RV' Cavity Barrier.
- If alignment is not achieved, then the OSCI must be repositioned accordingly. If during repositioning, damage to the adhesive tape occurs that could compromise the bond between the OSCI and panel, it is recommended that the poorly aligned OSCI is discarded and a new piece fitted in the correct position.

Profiled cassette panels will sometimes feature panel 'stiffeners', often in the form of a hollow top hat section bonded to the rear of the cassette panel. The profiles are usually applied during the fabrication of the panels prior to the application of the OSCI, meaning they intersect the OSCI and provide a clear route for fire to bypass the OSCI and cavity barrier provision. The extent of the stiffeners usually means there is no way to infill the void within the stiffener after it has been applied to the panel.

These stiffeners are not always identified on project drawings and so we would suggest seeking advice from the panel manufacturer at the earliest opportunity to clarify whether they intend to apply any such stiffeners to the panels and to consider how they can be addressed at the production stage. Please contact [technical.services@siderise.com](mailto:technical.services@siderise.com) with details of any stiffeners present on your proposed design and we will be happy to advise on the most appropriate approach to address them.

### **Fitting**

- Check the surface of the panel is clean and free from contamination. Degrease where necessary and ensure the surface is fully dry.
- Check the adhesion of the OSCI to the panel surface before offering it up to the assembly.
- Cut the OSCI to the appropriate length and insert it onto the surface of the panel by removing the self-adhesive strip and pressing firmly down onto the surface.
- Apply uniform pressure across the OSCI to ensure it is firmly fixed in place, taking care to position the OSCI under the top lip of any returns on the cassette panel to make sure that the panel is filled and to aid retention.
- Siderise Aluminium Jointing Tape (RFT120/45) must be applied to cover the stonewool faces and overlap onto the rear of the cladding panel and OSCI foil facing to ensure a weather-tight seal.

### **Joints**

- Maximum lengths should be used wherever possible to minimise the number of joints.
- The OSCI can be jointed, the minimum length that can be used is 200mm.
- The joints between the individual lengths of OSCI should be tightly butted and taped with Siderise foil tape RFT 120/45.

### **Adhesion**

- Whilst large-scale testing of OSCI has been carried out with ACM panels, the surface of ACM facade panels and therefore suitability for adhesion may vary.
- All panels must be checked for adhesion to the OSCI and advice sought from Siderise should doubts arise about OSCI/Panel compatibility.

Please see separate Installation Instructions for further information.

Siderise offers Site Services support whereby we attend the site to assist in the preparation of a mock-up or benchmark area to facilitate a successful installation.

Please contact [site.services@siderise.com](mailto:site.services@siderise.com) for further information.

**Table 1: OSCI Selection by Cavity Barrier**

Siderise Cavity Barrier Type	Cavity Barrier Orientation	Cavity Barrier Thickness (mm)	OSCI Width (mm)
RH25 - 90/30	Horizontal	75	100
RH25 - 60/60	Horizontal	90	115
RH25 - 90/60	Horizontal	90	115
RH25- 120/60	Horizontal	120	145
RH25 - 120/90	Horizontal	120	145
RH50 - 30/30	Horizontal	75	100
RH50 - 60/60	Horizontal	90	115
RV - 90/30	Vertical	75	100
RV - 90/60	Vertical	90	115
RV - 120/120	Vertical	120	145

Table 1 provides the OSCI width which is determined by the fire rating of the Siderise Cavity Barrier in use on the project.

**Siderise OSCI** should not be used in conjunction with cavity barriers from another manufacturer or type.

**Table 2 : Product Codes and Dimensions**

Product Code	OSCI Length (mm)	OSCI Width (mm)	OSCI Depth (mm)
OSCI/1220-100-40	1220	100	40
OSCI/1220-100-50	1220	100	50
OSCI/1220-100-60	1220	100	60
OSCI/1220-115-40	1220	115	40
OSCI/1220-115-50	1220	115	50
OSCI/1220-115-60	1220	115	60
OSCI/1220-145-40	1220	145	40
OSCI/1220-145-50	1220	145	50
OSCI/1220-145-60	1220	145	60

For required OSCI width please see Table 1.

The depth of the OSCI can be variable with a minimum depth of 21mm. The sizes quoted in Table 2 would be considered standard.

Other OSCI depths are available, please contact [technical.services@siderise.com](mailto:technical.services@siderise.com) for further information.

**Siderise OSCI** should not be used in conjunction with cavity barriers from another manufacturer or type.

## Environmental

- Stonewool core is Recyclable.

## Additional Information

The following information is available upon request:

- Standard Details
- Installation Instructions
- Safety Data Sheet
- NBS Specification Clauses

## Technical Support

For Technical and product specification advice, please contact the Technical Services Team: [technical.services@siderise.com](mailto:technical.services@siderise.com)

For Site advice, installation training and inspection, please contact the Site Services Team: [site.services@siderise.com](mailto:site.services@siderise.com)

## Context

The information in this datasheet is believed to be accurate at the date of publication. Siderise has a policy of continuous product improvement and reserves the right to alter or amend the specifications of products without prior notice. Siderise does not accept responsibility for the consequences of using the products described outside of the recommendations within this datasheet. Expert advice should be sought where there is any doubt about the correct specification or installation of Siderise products.

Published Version: OSCI\_v1\_16\_20230926\_136

[www.siderise.com](http://www.siderise.com)



**Siderise GROUP**

Forge Industrial Estate,  
Maesteg, UK, CF34 0AH  
T: +44 (0)1656 730833  
F: +44 (0)1656 812509  
E: [sales@siderise.com](mailto:sales@siderise.com)