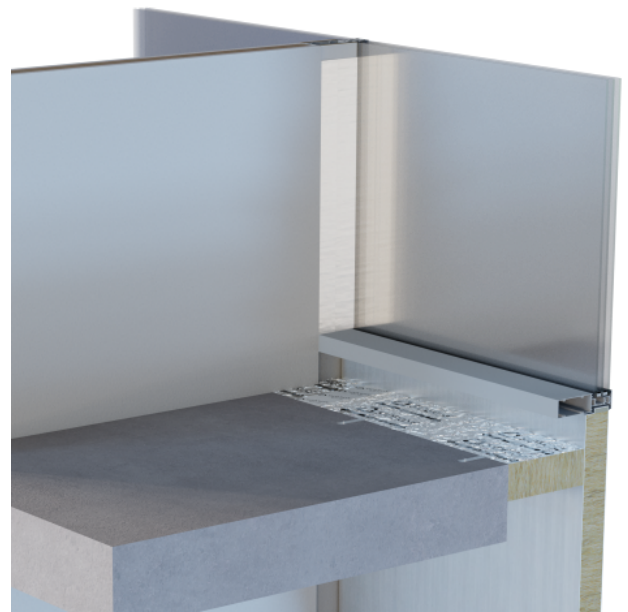


# Siderise MC Mullion Cover



Siderise MC Mullion Cover is a decorative mullion liner for Acoustic or Acoustic & Fire enhancement of Curtain Walling Mullions.

## Application

Siderise MC Mullion Cover provides a practical means of improving the sound insulation performance of curtain walling mullions abutting partitions, Acoustic Only and Acoustic + 2 Hour Fire rated versions are available. The Siderise MC is fitted to the faces of the mullions and therefore is suitable for use in 'Fit-Out', refurbishment and 'New Build' projects.

Siderise MC is suitable for use on both 'Stick' and 'Unitised' curtain wall systems, and for any mullion size from 80mm – 255mm. The Acoustic + 2 Hour Fire rated version has been tested at a maximum width of 205mm.

## Product Description

Siderise MC is usually available from stock in both 'White RAL 9016' and 'Dark Grey RAL 7016' or can be supplied to any RAL Colour, subject to MOQ and Extended Delivery Period.

Siderise MC comprises:

### **Standard Retaining Strips**

Supplied in 3m Lengths, 26mm wide, 'Dark Grey 7016 PPC', complete with retaining clips at 150mm centres.

### **Standard Female Cover Plate (x2)**

Supplied in 3m Lengths, one width only, available in both 'White RAL 9016' and 'Dark Grey RAL 7016'.

### **Standard Male Cover Plate (x2) (either Small or Large)**

Supplied in 3m Lengths, in two sizes, 'Small' to suit mullions 80mm – 135mm depth or 'Large' to suit mullions 136mm – 255mm depth, available in both 'White RAL 9016' and 'Dark Grey RAL 7016'.

### Infill

The Infill is supplied cut to suit width of the profile / mullion depth, allowing for a tight fit between the cover assembly. The Acoustic Only option is a 30mm thick acoustic foam and mass barrier composite. The Acoustic & Fire option is also a 30mm thick composite, comprising of mineral wool and mass barrier layers.

### Façade movement

The Siderise MC allows for a degree of temporary building movement due to wind loading.

The typical movement that can be accommodated is:

- Compression 5mm. This is limited by the compressibility of the infill.
- Expansion 10mm. This is limited to prevent the male cover plate leaving the female completely. During expansion there will be a gap in the infill behind the cover plate which may affect the acoustic and fire performance for the temporary wind loading.

### Thermal Shock

With any material that abuts the glass, such as dummy mullions, plasterboard etc, consideration to the possibility of 'Thermal Fractures' or 'Thermal Shock' should be given, Siderise MC requires the steel retaining strip to be bonded to the glass with an SA tape, generally it is considered that if the glass is either Heat Strengthened or Toughened, issues are unlikely, however if in doubt it would be prudent to check with the glazing manufacturer for confirmation for your specific project.

### Maintenance

Siderise MC requires no maintenance other than periodic cleaning by light vacuuming or wiping with a damp cloth.

## Fire Performance

### Fire Resistance

Siderise MC Acoustic & Fire version has been tested in conjunction with an aluminium mullion to the temperature and pressure conditions of BS EN 1363 Part 1: 2020, and the test principles of BS EN 1366 Part 4: 2021.

From this test-data the Acoustic + Fire Siderise MC installed either side of a 50mm wide aluminium mullion can offer the following fire resistance ratings: 120 minutes (E) Integrity and 120 minutes (I) Insulation for Mullions up to 205mm wide.

### Reaction to Fire

In terms of 'Reaction to Fire', the products are classified to EN 13501-1. See Table 1.

**Table 1: Reaction to Fire Performance**

Product Code	Classification
Siderise MC – Acoustic Only	B-s1,d0
Siderise MC – Acoustic & Fire	B-s1,d0

## Acoustic Performance

Siderise MC has been tested to EN ISO 10140-2:2010 & rated to BS EN ISO 717-1:2013. Table 1 below shows the laboratory tested values.

**Table 2: MC Acoustic Performance - Weighted Sound Reduction Index**

Product Type	R <sub>w</sub> (dB)	C:Ctr
205mm x 50mm Empty Mullion	24	(-2;-5)
Siderise MC – Acoustic Only	44	(-3;-8)
Siderise MC – Acoustic & Fire	43	(-2;-7)
Siderise MC + Siderise MI6 Inserts	49	(-3;-9)

### Use in practice

When Siderise MC is used in combination with a 50dB R<sub>w</sub> partition, no measurable loss in total room-to-room separation is expected (0.44dB\*). If the partition value increases to 56dB R<sub>w</sub>, the overall performance is typically only reduced by 2dB\*, by comparison, for untreated mullions the reduction in performance would be over 17dB\* reduction.

*\*Based on Composite SRI Calculations for a 4m wide partition abutting a 150mm mullion wide, empty or using the Siderise MC Acoustic only option*

## Technical Specification

**Table 3: Product Properties**

Properties	Value
Form supplied	Kits: 3000mm long x 80-255mm wide (Acoustic ), 3000mm long x 80-205mm wide (Acoustic & Fire )
Colour	Standard: Dark Grey RAL 7016, White RAL 9016
Finish	Polyester powder coated aluminium
Thickness	35mm
Surface weight	Nominal 25kg/m <sup>2</sup>
Density	Nominal 715kg/m <sup>3</sup>
Cavities	Suitable for mullions 80-255mm wide (Acoustic), 80mm-205mm wide (Acoustic & Fire)
Fire resistance	120 mins (Integrity) & 120 mins (Insulation) - see 'Fire Resistance' section
Reaction to fire	See Table 1 above

## Environmental

- The Aluminium components are made from an average of 60% recycled content, 40% Primary Aluminium, 13% Recovered Post Industrial Scrap & 47% Recovered Post-Consumer Scrap and is also 100% recyclable.
- The Mass Barrier is made from an average of 68% recycled material fillers and is also recyclable.
- The Mineral Wool components, (if applicable), are made from an average of 40% recycled content and is also 100% recyclable.
- Siderise are ISO 14001:2015 registered (Intertek) for its Environmental Management System.

## Additional Information Available

The following information is available upon request or via download from our website:

- 1/3rd octave Laboratory Test Data available on request.
- Fire Test Certificate available on request.
- Fixing Guidance Sheet.
- Safety Data Sheets.

### Available CPD's

Contact Siderise for further information on our CPDs

## Technical Support

Technical support - Technical Team: +44(0)1473 827695, [technical.sspl@siderise.com](mailto:technical.sspl@siderise.com)

Sales support - Internal Sales Team: +44(0)1473 827695 [sales.sspl@siderise.com](mailto:sales.sspl@siderise.com)

## Context

The information published herein is given in good faith and is believed to be accurate at the time of publication. Please check that this version is current. Siderise has a policy of continuous product improvement and reserves the right to alter or amend the specifications of products without prior notice. Siderise does not accept responsibility or the consequences of using the products and systems described outside of any given recommendations within this document or its other official documentation. Recommendations for use should be verified in regard to the suitability and compliance with actual requirements, specifications and any applicable laws, codes, and regulations. Expert advice should be sought where there is any doubt about the correct specification or installation of Siderise products and systems

MC\_6\_05\_20260501\_1230