

Notes:

Siderise IC-FS to meet or exceed compartment wall/floor integrity & insulation requirement.

Disclaimer:

This drawing is provided for illustration only and should be read in conjunction with the corresponding product technical data sheets. Standard details may not be equivalent to tested details for which alternative drawings may be available. Siderise RFT foil tape is not shown. The detail(s) and information contained in this drawing are believed to be accurate at the date of publication and may be altered or amended without notice. The application, suitability and use of any of our products should be reviewed by the appropriate authority and/or professional. To the fullest extent permissible by law, we accept no liability for this drawing which should not be relied on for any purpose, except in accordance with our Terms and Conditions for the Sale of Goods. The Siderise Group owns all intellectual property rights in this drawing, which should not be reproduced without our consent. For further information and support, please contact [technical.services@siderise.com](mailto:technical.services@siderise.com).

Revisions			
Rev.	Date	By	Description
A	26-09-25	BC	First Issue

Description

IC-FS on R/C Slab edge & end of stud partition

Drawing Reference

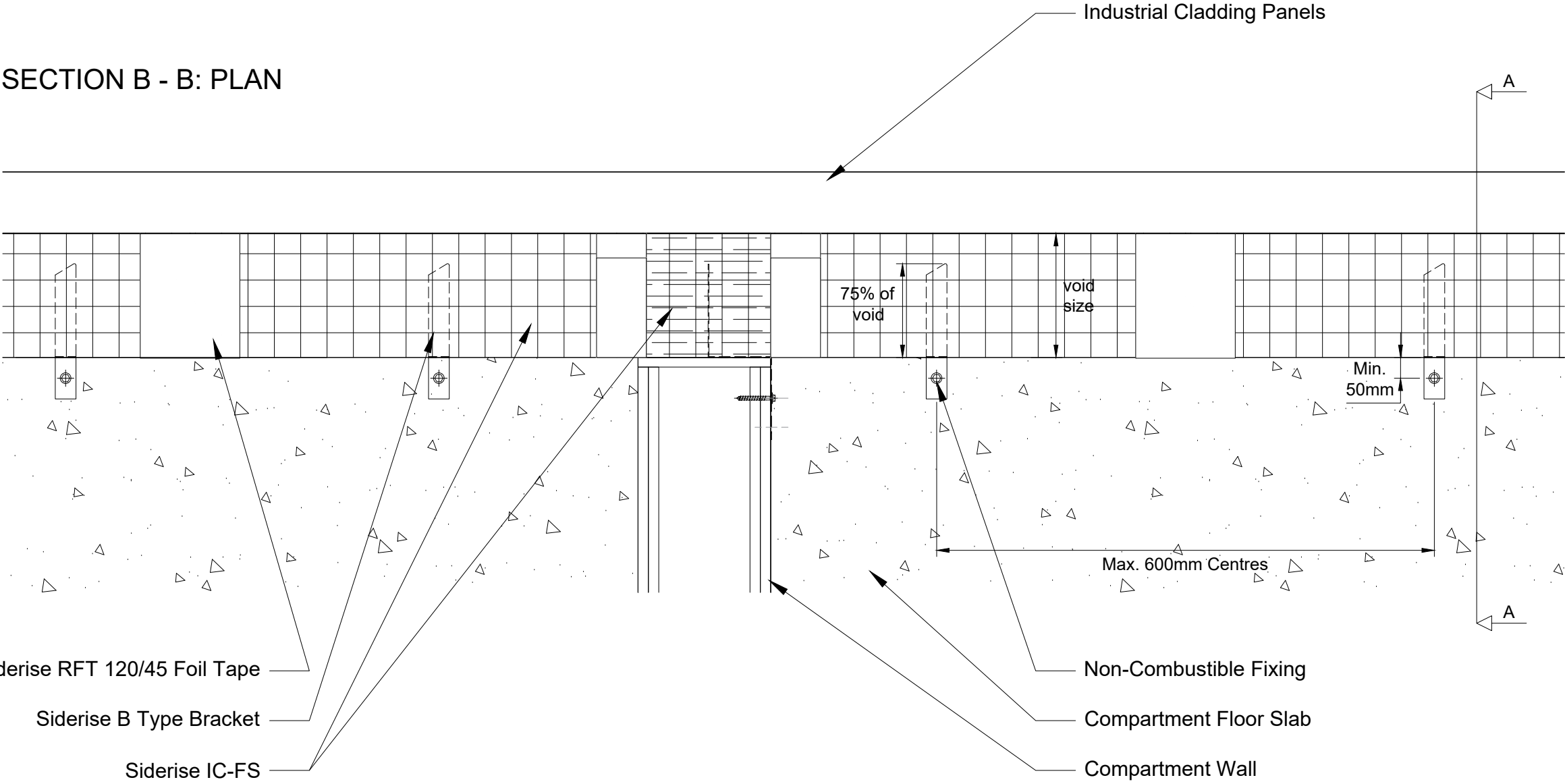
SSD\_IC\_0005\_01



Created by		Approved by	
BC		SH	
Date	26-09-25	Rev.	Sheet
		A	1/3

SIDERISE STANDARD DETAIL

SIDERISE STANDARD DETAIL



Notes:  
Siderise IC-FS to meet or exceed compartment wall/floor integrity & insulation requirement.

Disclaimer:  
This drawing is provided for illustration only and should be read in conjunction with the corresponding product technical data sheets. Standard details may not be equivalent to tested details for which alternative drawings may be available. Siderise RFT foil tape is not shown. The detail(s) and information contained in this drawing are believed to be accurate at the date of publication and may be altered or amended without notice. The application, suitability and use of any of our products should be reviewed by the appropriate authority and/or professional. To the fullest extent permissible by law, we accept no liability for this drawing which should not be relied on for any purpose, except in accordance with our Terms and Conditions for the Sale of Goods. The Siderise Group owns all intellectual property rights in this drawing, which should not be reproduced without our consent. For further information and support, please contact [technical.services@siderise.com](mailto:technical.services@siderise.com).

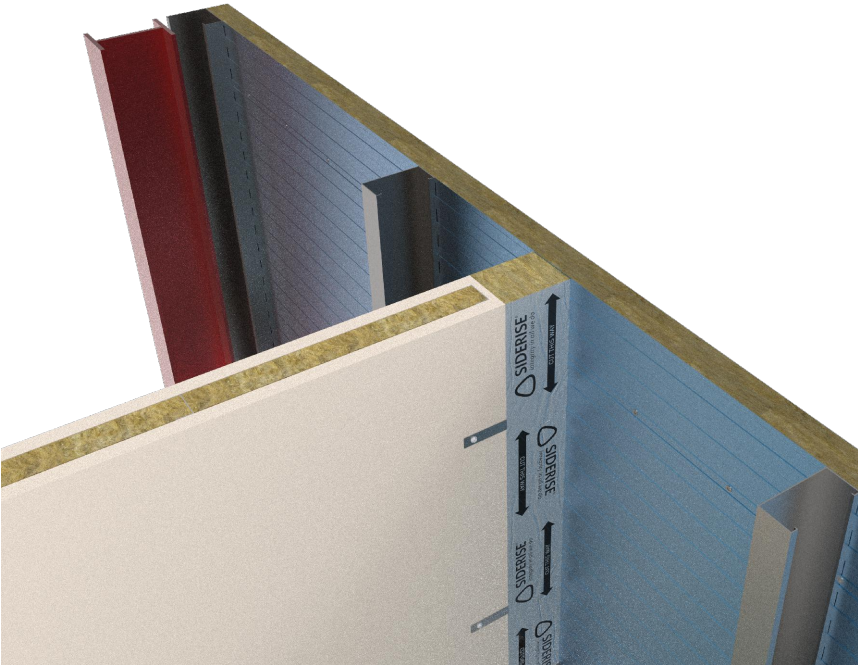
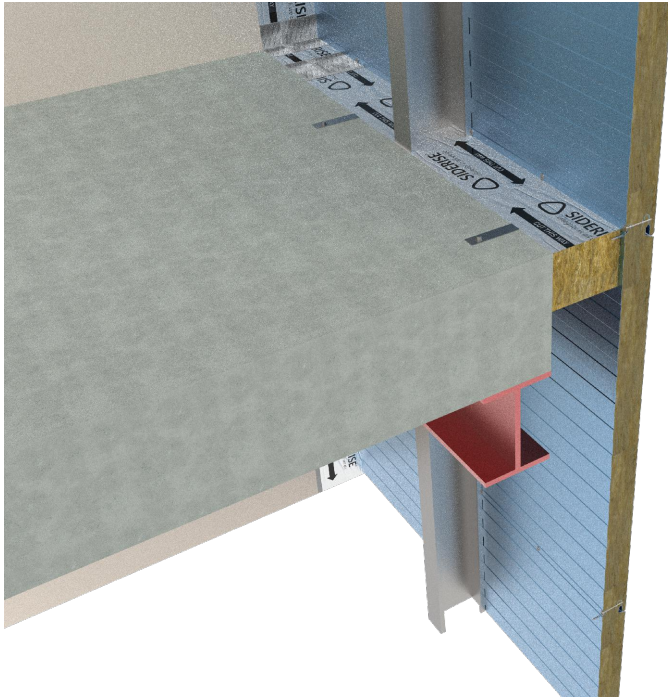
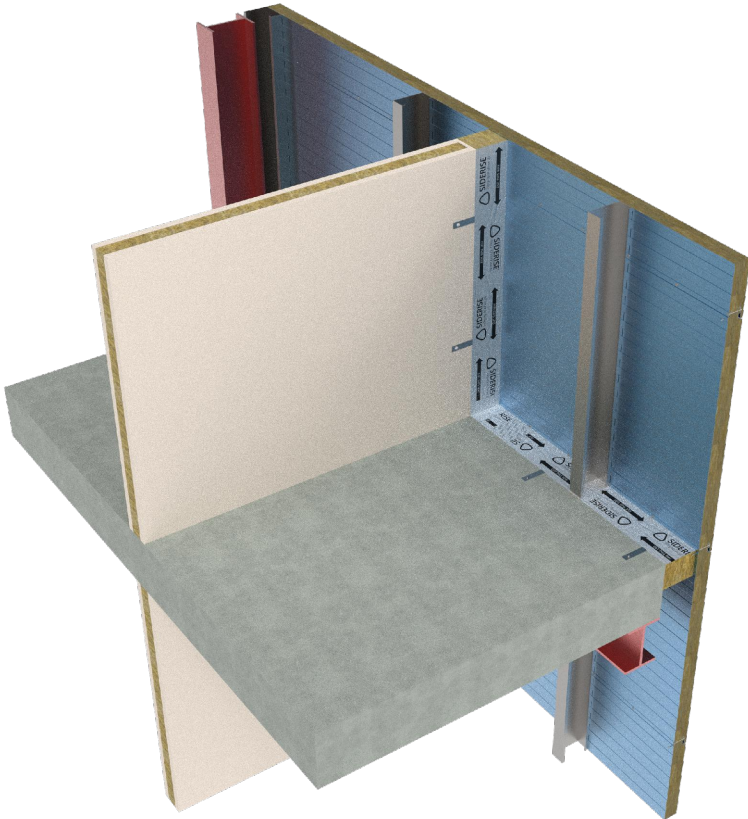
Revisions			
Rev.	Date	By	Description
A	26-09-25	BC	First Issue

Description  
IC-FS on R/C Slab edge & end of stud partition

Drawing Reference  
SSD\_IC\_0005\_02



Created by BC		Approved by SH	
Date 26-09-25	Rev. A	Sheet 2/3	



Notes:  
Notes to be added here

Disclaimer:  
This drawing is provided for illustration only and should be read in conjunction with the corresponding product technical data sheets. Standard details may not be equivalent to tested details for which alternative drawings may be available. Siderise RFT foil tape is not shown. The detail(s) and information contained in this drawing are believed to be accurate at the date of publication and may be altered or amended without notice. The application, suitability and use of any of our products should be reviewed by the appropriate authority and/or professional. To the fullest extent permissible by law, we accept no liability for this drawing which should not be relied on for any purpose, except in accordance with our Terms and Conditions for the Sale of Goods. The Siderise Group owns all intellectual property rights in this drawing, which should not be reproduced without our consent. For further information and support, please contact [technical.services@siderise.com](mailto:technical.services@siderise.com).

Revisions			
Rev.	Date	By	Description
A	26-09-25	BC	First Issue

Description  
IC-FS on R/C Slab edge & end of stud partition

Drawing Reference  
SSD\_IC\_0005\_03



Created by BC		Approved by SH	
Date 26-09-25	Rev. A	Sheet 3/3	