

SECTION
E-E

- Spiral Screws (40mm at 300mm centres)
- Insulation Screw & Washer (Nominal 300-400mm centres)
- Furnace
- x2 Layers 25mm Siderise CW-FB Steel Panel (min. 0.9mm thick)
- Min. 100mm 60kg/m³ A1 Insulation
- Composite Panel (min. 30.5mm thick; 0.9mm Steel inner, 28.4mm 120kg/m³ stonewool core, 1.2mm Alu. outer)
- Double Glazed Unit (Min. 28mm [6/6])
- CW Frame (Min. 2.5mm thick)
- Facade Bracket
- Siderise CW-FS180
- Siderise CW-FS Bracket

Revisions			
Rev.	Date	By	Description
A	23-05-24	BC	First Issue
B	25-09-24	BC	Amended Dims
C	02-09-25	CM	Amended Dims

Siderise Standard Detail

Title
EN1364-4 Test Detail
WF 317785

Created by
BC

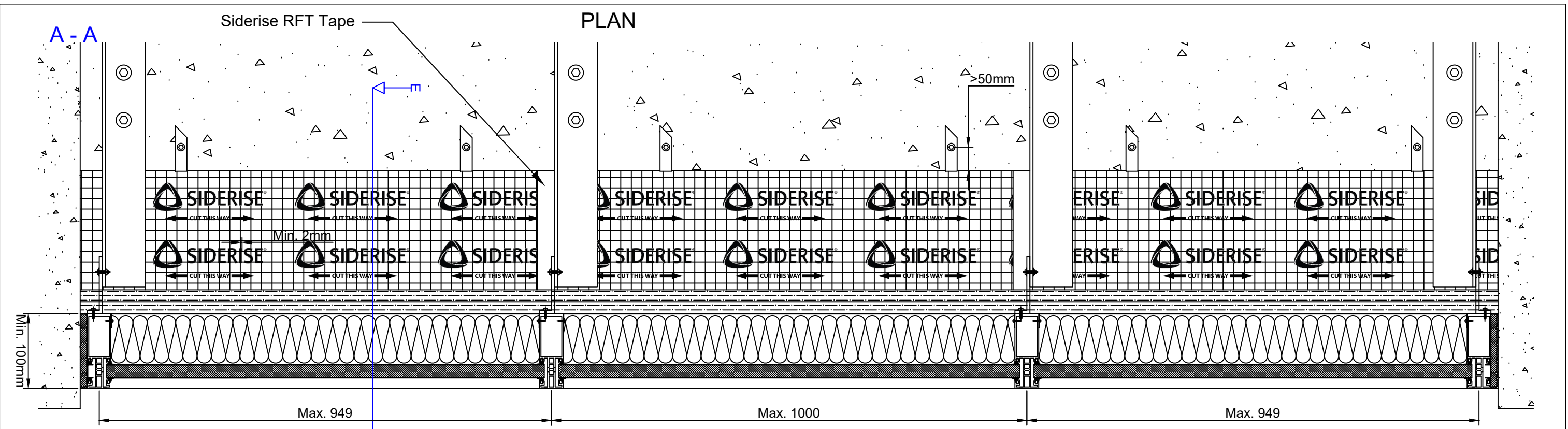
Approved by
CM

SSD2006-1

Sheet 1/3 Date 02/09/2025

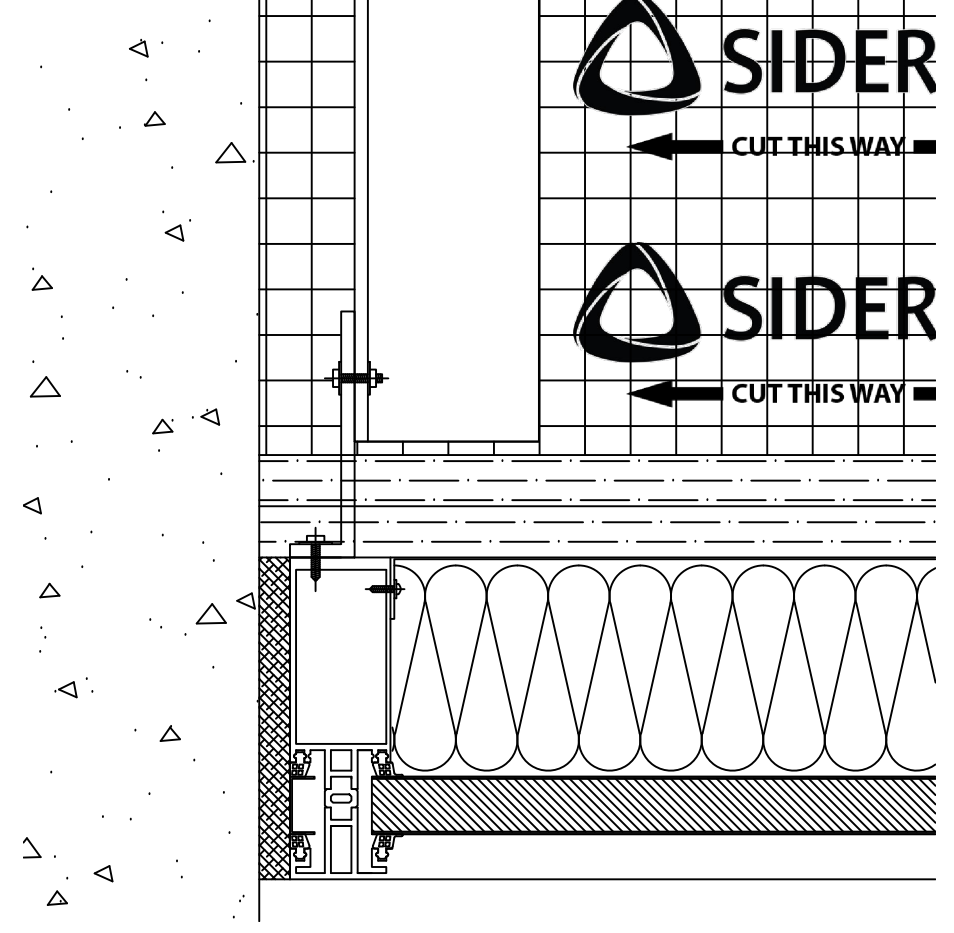
Scale Not To Scale Rev. C



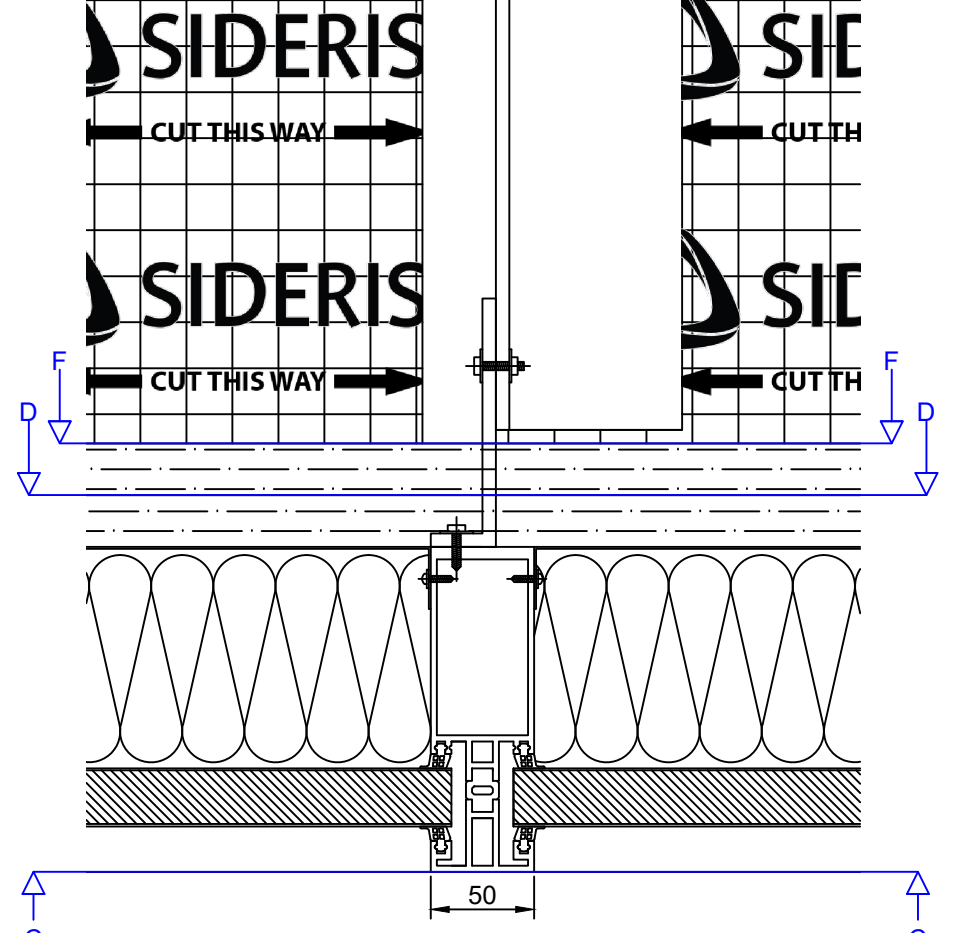


Revisions			
Rev.	Date	By	Description
A	23-05-24	BC	First Issue
B	25-09-24	BC	Amended Dims
C	02-09-25	CM	Amended Dims

Furnace Sides



B - B



Siderise Standard Detail

Title
**EN1364-4 Test Detail
 WF 317785**

Created by
BC

Approved by
CM

SSD2006-2

Sheet 2/3	Date 02/09/2025
Scale Not To Scale	Rev. C

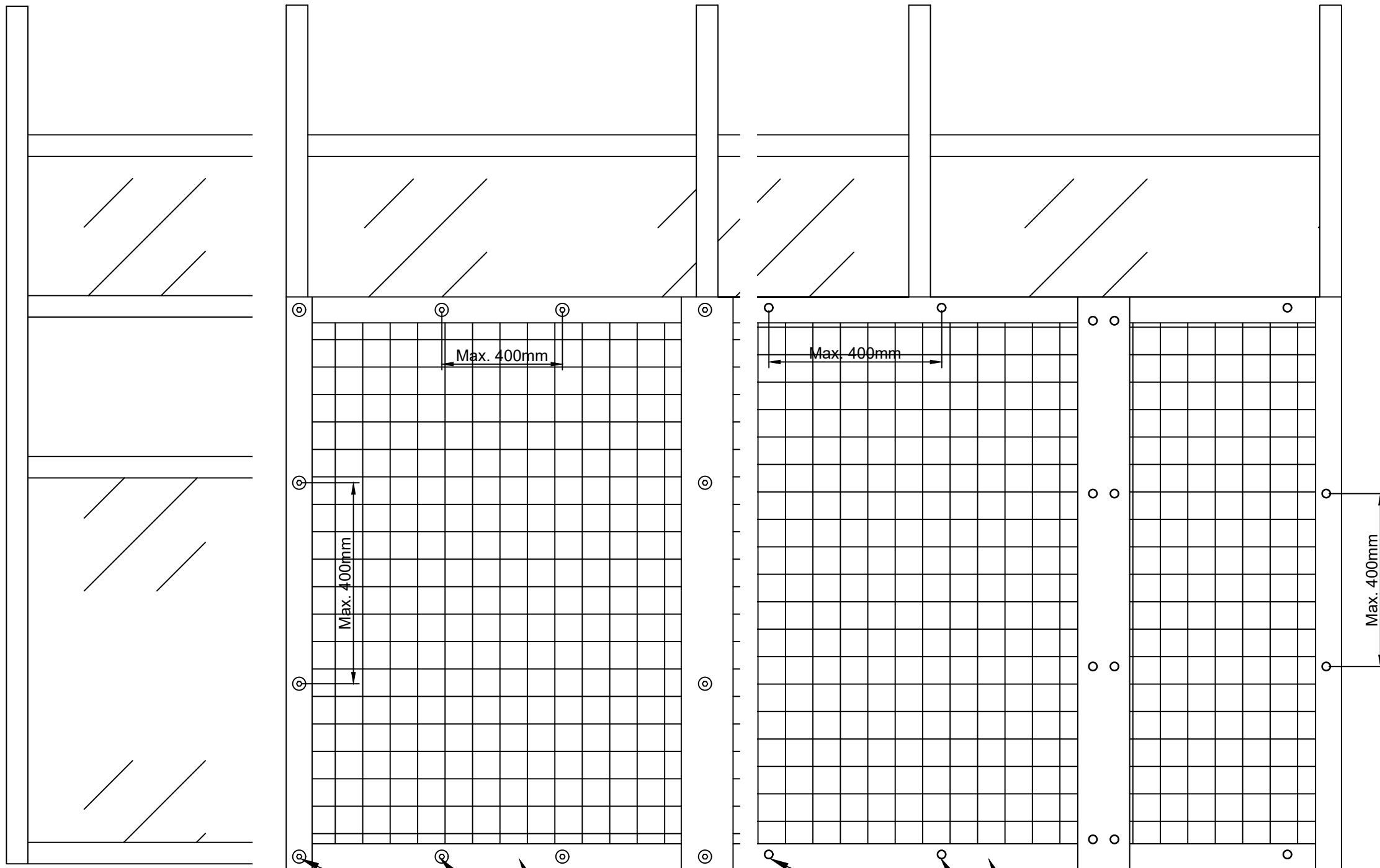
FRONT

BACK

C - C

D - D

F - F



RFT 120/45 Foil Tape

RFT 120/45 Foil Tape

Screws with washers covered with RFT Foil Tape (Nominal 300-400mm centres)

40mm Insulation Screws covered with RFT Foil Tape (Nominal 300-400mm centres)

Revisions			
Rev.	Date	By	Description
A	23-05-24	BC	First Issue
B	25-09-24	BC	Amended Dims
C	02-09-25	CM	Amended Dims

Siderise Standard Detail

Title
EN1364-4 Test Detail
WF 317785

Created by
BC
Approved by
CM

SSD2006-3

Sheet 3/3 Date 02/09/2025

Scale Not To Scale Rev. C

