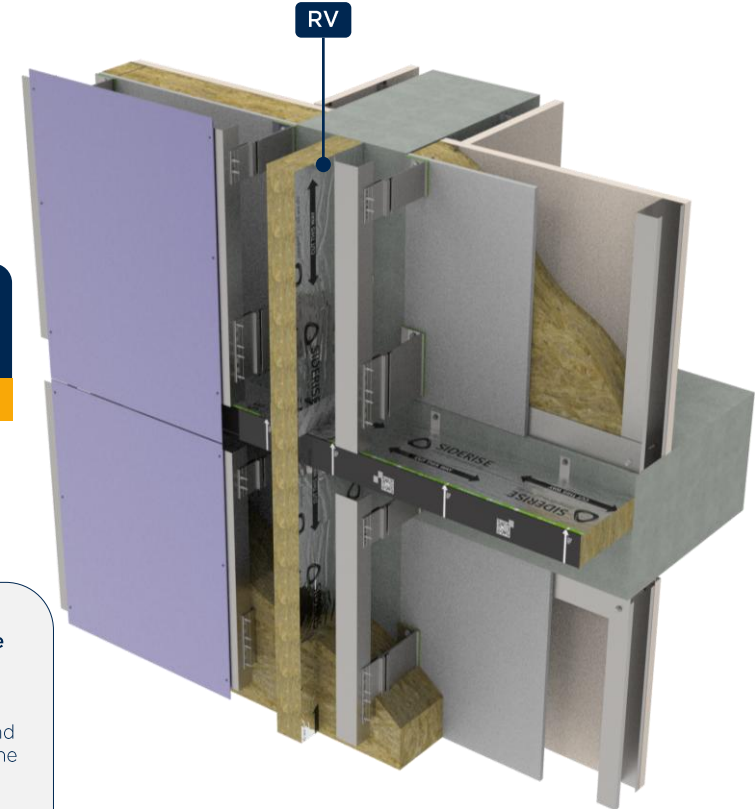
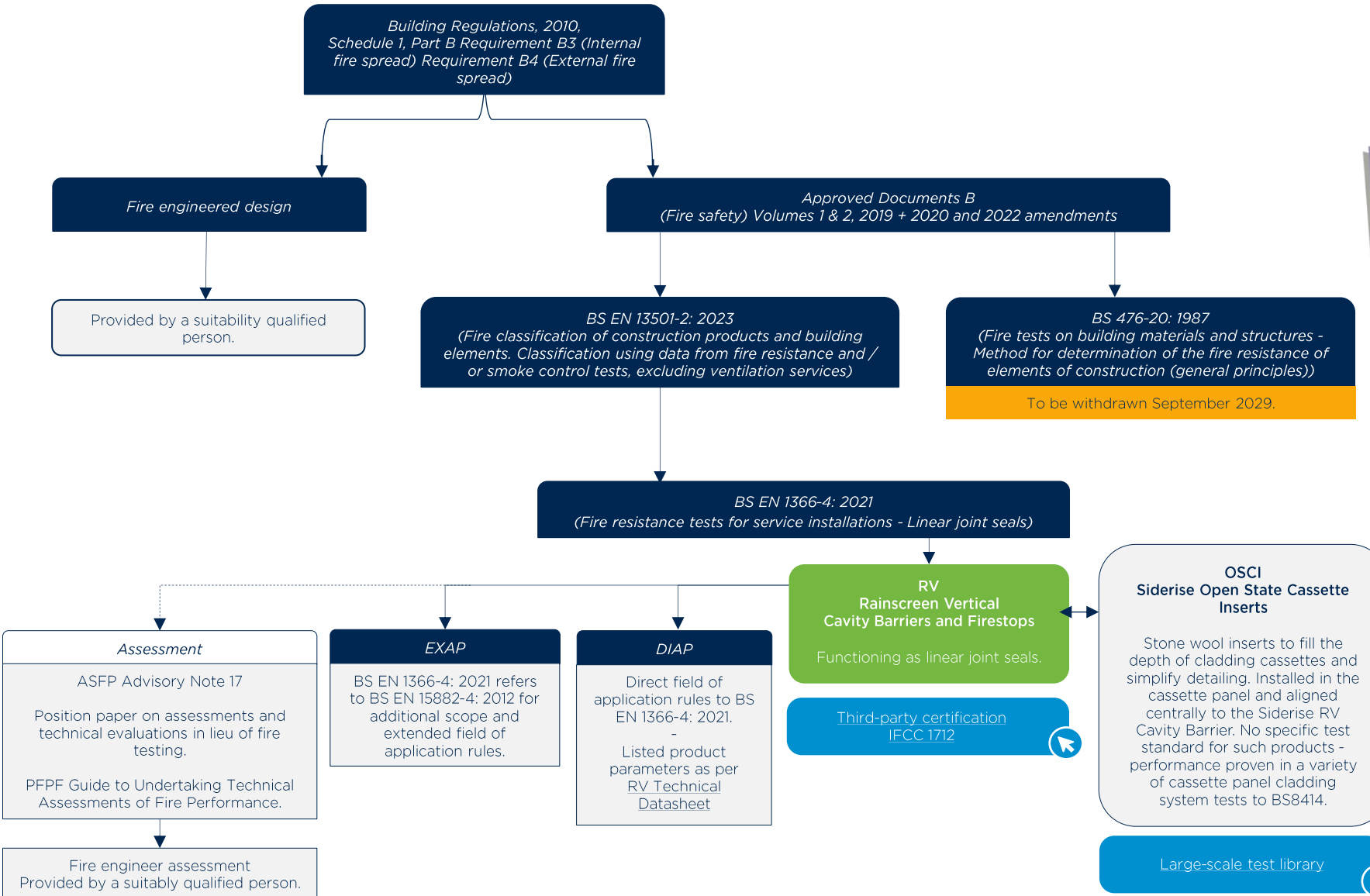


# Compliance paths - Fire resistance of vertical linear joints seals in rainscreen façade systems

Guidance to outline relevant testing standards- Satisfying the functional performance requirements of the Building Regulations in England and Wales

This document outlines applicable cavity barrier and fire stop testing methodologies. Full compliance and acceptance of project specific arrangements remains subject to holistic review by the Project Fire Engineer/ appointed supervising authority.



**OSCI Siderise Open State Cassette Inserts**

Stone wool inserts to fill the depth of cladding cassettes and simplify detailing. Installed in the cassette panel and aligned centrally to the Siderise RV Cavity Barrier. No specific test standard for such products - performance proven in a variety of cassette panel cladding system tests to BS8414.

Large-scale test library