

SIDERISE MC SYSTEM

Fixing guidance per treated mullion



SIDERISE MC SYSTEM

Siderise MC – Acoustic Only

- 4 x Siderise Retaining Strips, 3m x 26mm x 1.2mm
- 2 x Siderise Female Cover Plate, 3m Length, 60mm wide
- 2 x Siderise Male Cover Plate, 3m length (100mm or 220mm wide)
- 6 x Siderise Acoustic Infill, 1m lengths cut to 8mm narrower than profile / mullion depth, (Foam/Barrier Composite)
- Roll Siderise Double Sided SA Tape (12m x 24mm wide)
- Cartridge Fire and Acoustic Gap Sealant (310ml)

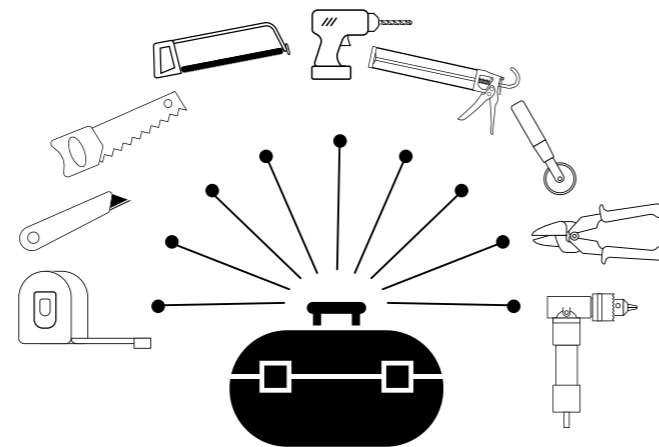
Siderise MC – Acoustic & Fire

- 4 x Siderise Retaining Strips, 3m x 26mm x 1.2mm
- 2 x Siderise Female Cover Plate, 3m Length, 60mm wide
- 2 x Siderise Male Cover Plate, 3m length (100mm or 220mm wide)
- 6 x Siderise Acoustic/Fire infill, 1m Length cut to 8mm narrower than profile / mullion depth, (Mineral Wool/ Barrier Composite)
- Roll Siderise Double Sided SA Tape (12m x 24mm wide)
- Cartridge Fire and Acoustic Gap Sealant (310ml)

Common tool and product requirements

Suitable fixing screws, countersunk heads for Retaining Strips through mechanical fixing to the partition edge, including suitable wall plugs as required.

- Screwdriver / Screwdriver Bits
- Metal Hacksaw
- Sharp Knife
- Fine Tooth Saw
- Drill Bits
- Countersink Drill Bits
- Tape measure / Rule
- Skeleton / Cartridge Gun
- Edge Roller
- Dust sheet
- Drill
- Sheet Metal Sheer or Nibbler
- Right-Angle Drill bit



Standard Retaining Strips & SA Tape

Supplied in 3m Lengths, 26mm wide, Dark Grey 7016 PPC, Supplied in 3m lengths, 26mm wide, Dark Grey 70 16 PPC, complete with retaining clips at 300 mm centres (see Fig 1). Cut to the height of the mullion to be treated, 2 per side, 4 per mullion. Apply the Siderise adhesive tape to the rear of the retaining strip. This is a pressure-activated tape, and therefore pressure should be applied to the tape with a small edge roller or by hand to ensure good adhesion. As with all adhesive tapes, ensure all surfaces are clean, dry and dust / dirt free before application.

Peel the backing film off the adhesive tape for direct adhesion to the rear of the glass unit (*see note below). The open end of the clips should be facing away from the mullion, ensuring a 2mm gap between the edge of the retaining strip and the mullion surface (see Fig2). Apply pressure to the retaining strip between the clips with a small edge roller or by hand to ensure a strong bond.

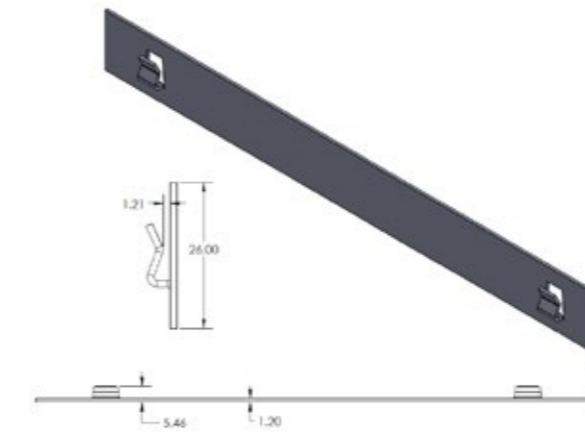


Figure 1

The rear of the retaining strip is a very dark grey, therefore some visibility of the adhesive tape may be present depending on floor level, glass type, glass transparency etc. If this is of potential concern, then we would suggest that a 32mm wide fitting /blacking out of the glass may be required.

For the partition edge, it is often recommended that in addition to the adhesive tape, the retaining strip is mechanically fixed with counter sunk screws (see Fig 2). The holes in the retaining strip should be counter sunk on-site to ensure the screw heads remain flush to the retaining strip. A 2mm gap between the edge of the retaining channel and mullion surface must be ensured (see Fig 2). Apply pressure to the retaining strip between the clips with a small edge roller or by hand.

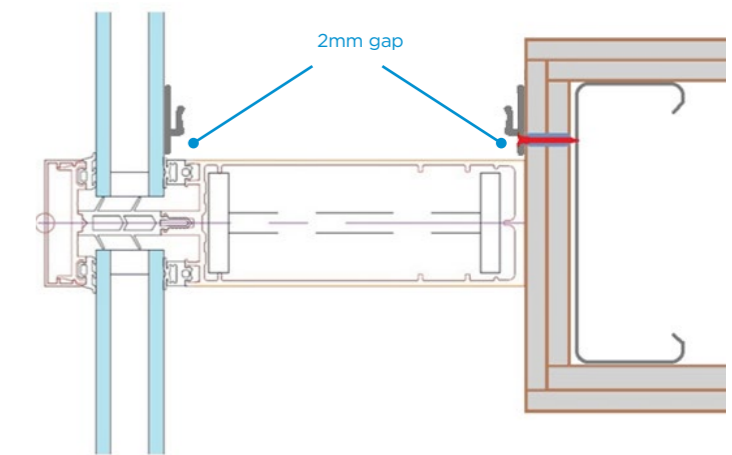


Figure 2

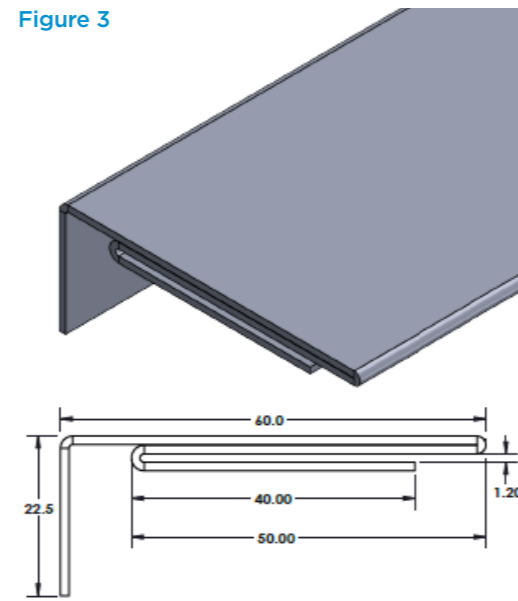
***Thermal Shock** With any material that abuts the glass, such as dummy mullions, plasterboard etc, consideration to the possibility of 'Thermal Fractures' or 'Thermal Shock' should be given, The SIDERISE® MC System requires the aluminium retaining strip to be bonded to the glass with an SA tape, generally it is considered that if the glass is either Heat Strengthened or Toughened, issues are unlikely, if in doubt it would be prudent to check with the glazing manufacturer for confirmation.

Standard Female Cover Plate

Supplied in 3m Lengths, 60mm wide, 22.5mm deep, straight polyester powder coated to suit the project requirements. These only need to be cut to the height of the mullion to be treated, 1 per side, 2 per mullion, and fitted together with the trimmed male. The female plate always is placed to the side closest to the partition.

Usually available from stock for rapid delivery in both 'White cover plate RAL 90 16' and 'Dark Grey RAL 70 16' or can be supplied to any RAL colour, subject to minimum order quantity and extended delivery period.

Figure 3



Standard Male Cover Plate (either Small or Large)

Supplied in 3m Lengths, in two sizes, 'Small' (see fig 4) to suit mullions 80mm – 135mm depth or 'Large' (see Fig 5) to suit mullions 136mm – 255mm depth, polyester powder coated to suit the project requirements. These need to be cut to the height of the mullion to be treated, 1 per side, 2 per mullion, and trimmed to width to suit the mullion depth being treated.

Fitted together with the female, the male is placed to the side closest to the glass and the female always is placed to the side closest to the partition.

Usually available from stock for rapid delivery in both 'White RAL 9016' and 'Dark Grey RAL 7016' or can be supplied to any RAL colour, subject to minimum order quantity and extended delivery period.

Figure 4

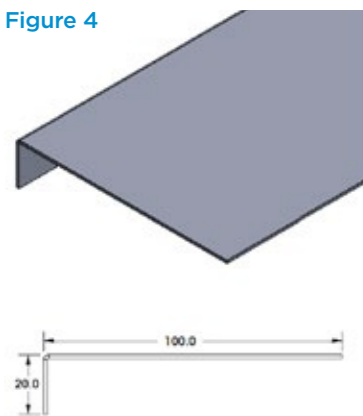
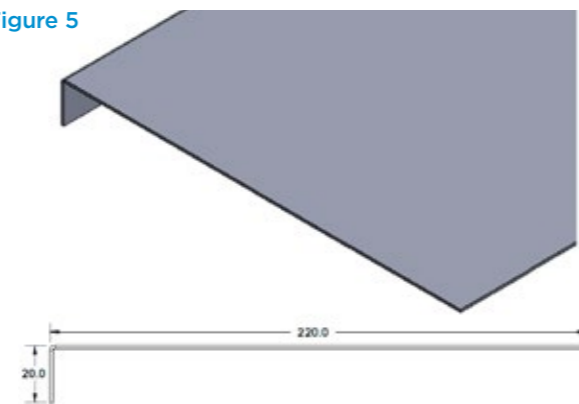


Figure 5



Once cut to length, the male cover plate needs to be trimmed to suit the mullion depth. It should not be cut with tin snips as this can distort the aluminium. We would suggest a metal shear, sheet metal nibbler or any other tool cut the length without damaging the flatness of the profile.

The male needs to be trimmed to the width / depth of the mullion to be treated minus 37mm, (see Fig 6). This is to allow for the 2mm thickness of the retaining strip either side of the male and female assembly whilst maintaining sufficient penetration of the male into the female cover plate, as shown in the drawing.

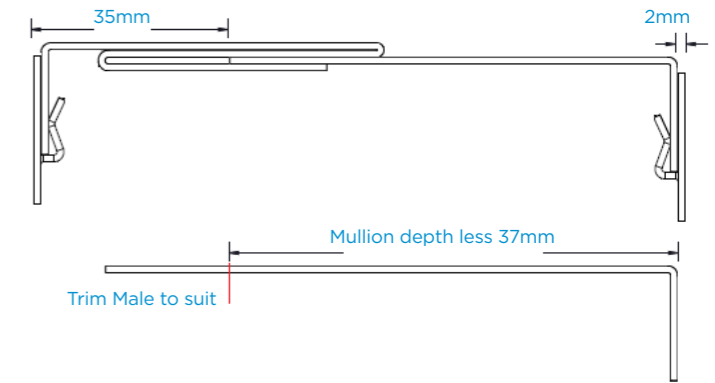
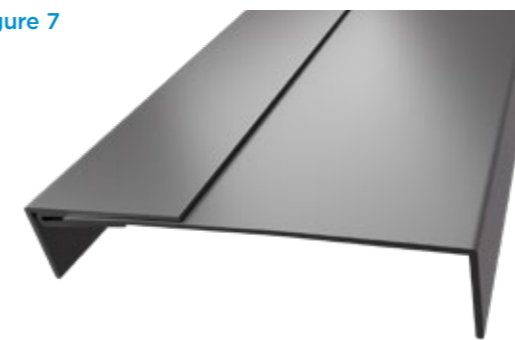


Figure 6

Figure 7



Once the male cover plate has been trimmed to suit, and both the male and female cover plates cut to the correct length, they can be paired up (see Fig 7).

The retaining strips should now be fitted and the cover plate assembly cut, trimmed and paired up ready for fitting. Next is to fit the Acoustic or Acoustic + Fire insulation material.

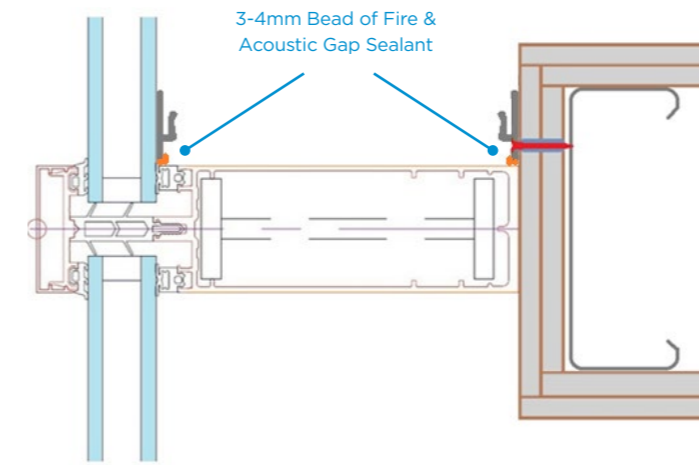


Figure 8

Insulation Material Fitting

Supplied in 3m Lengths, 26mm wide, Dark Grey 7016 PPC. For both the 'Acoustic' and 'Acoustic and Fire' options, a small bead of Siderise Fire and Acoustic Gap Sealant should be applied to the gap around the restraining strip and the mullion (see Fig 8). This should be approximately a 3-4mm bead.

Acoustic Only Option

Supplied in 1000mm lengths, cut to width to suit the profile, supplied the size of the mullion / profile width minus 8mm, to accommodate the retaining strips and cover plate assembly. The product comprises of a heavy mass membrane with a black acoustic foam sound absorption layer. The product is supplied with a pressure sensitive adhesive backing. Remove the release paper from the back and apply directly to the mullion surface, ensuring a close fit at the base, and close butt joints between each strip. The final strip should be accurately cut to length to suit, using a sharp knife through the heavy mass membrane side.(see fig 9).

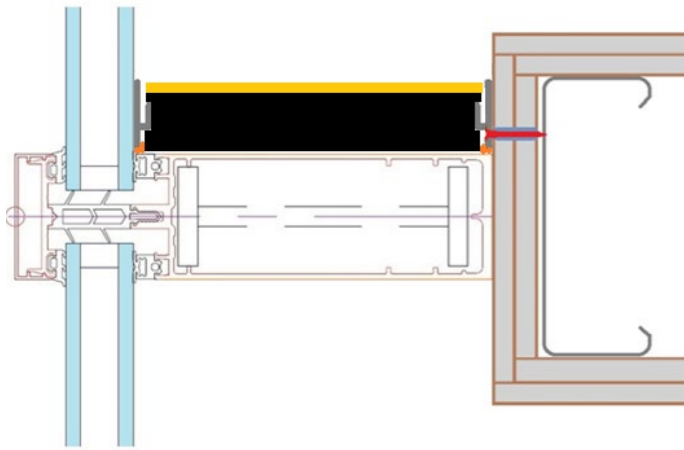


Figure 9

Acoustic & Fire Option

Supplied in 1000mm nominal lengths, cut to width to suit the profile, supplied the size mullion / profile width minus 8mm, to accommodate the retaining strips and cover plate assembly. The product comprises of a heavy mass membrane with a mineral wool sound absorption layer. The product is supplied with a pressure sensitive adhesive backing. Remove the release paper from the back and apply directly to the mullion surface, ensuring a close fit at the base, and close butt joints between each strip. The final strip should be accurately cut to length to suit, using a sharp knife through the heavy mass membrane, and fine tooth saw through the mineral wool layer.(see fig 10).

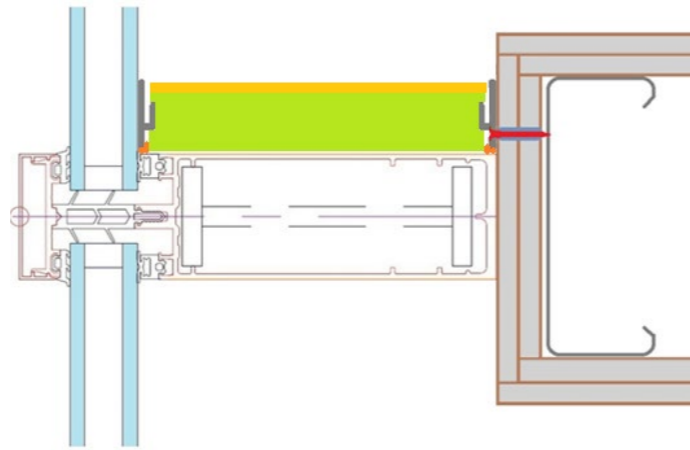


Figure 10

Figure 11



Cover Plate Assembly

The treated area is now ready for the cover plate assembly. Mount it into the retaining strips, enabling it to be held in place within the integral retaining clips.

The male and female cover plate assembly should be paired approximately 2-4mm narrower than the mullion depth, then pushed in to place until it is fully home, up against the insulation material (see Fig 11).

Figure 12



Repeat the other side

Then the treatment should be repeated for the other side of the mullion.



BY YOUR SIDE®

Siderise Special Products

Engineered acoustic solutions for equipment
manufacture and construction

United Kingdom

Siderise (Special Products) Ltd
Lady Lane Industrial Estate
Hadleigh, Suffolk, IP7 6BQ
T: +44 (0) 1473 827695

Sales Enquiries

T: +44 (0) 1473 827695
E: sales.sspl@siderise.com

Ordering and Customer Service

T: +44 (0) 1473 827695
E: service.sspl@siderise.com

Technical Support

T: +44 (0) 1473 827695
E: technical.sspl@siderise.com

www.siderise.com

Siderise Insulation

Passive fire solutions for the building
envelope

United Kingdom

Siderise Group, Forge Industrial Estate,
Maesteg, UK, CF34 0AY
T: +44 (0) 1656 730833 | F: +44 (0) 1656 812509

Middle East & India

Siderise Middle East Fz LLC, Office 132,
Al Shafar Investment Building,
Al Quoz Industrial Area 1, Dubai, UAE
T: +971 (0) 4 580 4999

Asia Pacific

Siderise (Asia Pacific) Pte. Ltd. 80 Robinson Road,
#02-00 Singapore 068898
T: +65-963 19310

